

1. Application Sector

DAMTEC® vibra 3D 6/3 is a mat of rubber granulates with profile for impact sound insulation and for absorption of vibrations and structure borne noise. It can be used for different applications like under floating screed or under machine foundations.

2. Material

High-grade fibres of recycled rubber with PU elastomer bonding agent.

3. Appearance

colour: black
surface: granular texture, with profile on one side

4. Dimensions/Tolerances

width:	1,219 mm / 1,250 mm	± 1.5 %
length:	9,140 mm / 8,000 mm	± 1.5 %
thickness:	6/3 mm	± 1.0 mm
density:	500 - 600 kg/m ³	

The data sheet is not subject to any change service! All information is without guarantee.
With the publication of this product data sheet all former issues cease to be valid.

Seite 1 von 4

5. Physical Characteristics

tensile strength:	approx. 0.3 N/mm ²	(ISO 1798)
elongation at break:	approx. 40%	(ISO 1798)
service temperature range:	- 40°C to 80°C	
flammability rating:	E _{fl}	(EN 13501-1)
maximum pressure:	$\sigma_{max} = 0.10$ N/mm ²	(EN 826)
dynamic bedding modulus:	0,006 - 0,200 N/mm ³ (depending on configuration, load and frequency)	
natural frequency:	15 - 27 Hz +/- 15% (depending on configuration, load and frequency)	

6. Installation:

Installation is to be carried out in accordance with the **DAMTEC® vibra 3D** installation instructions.

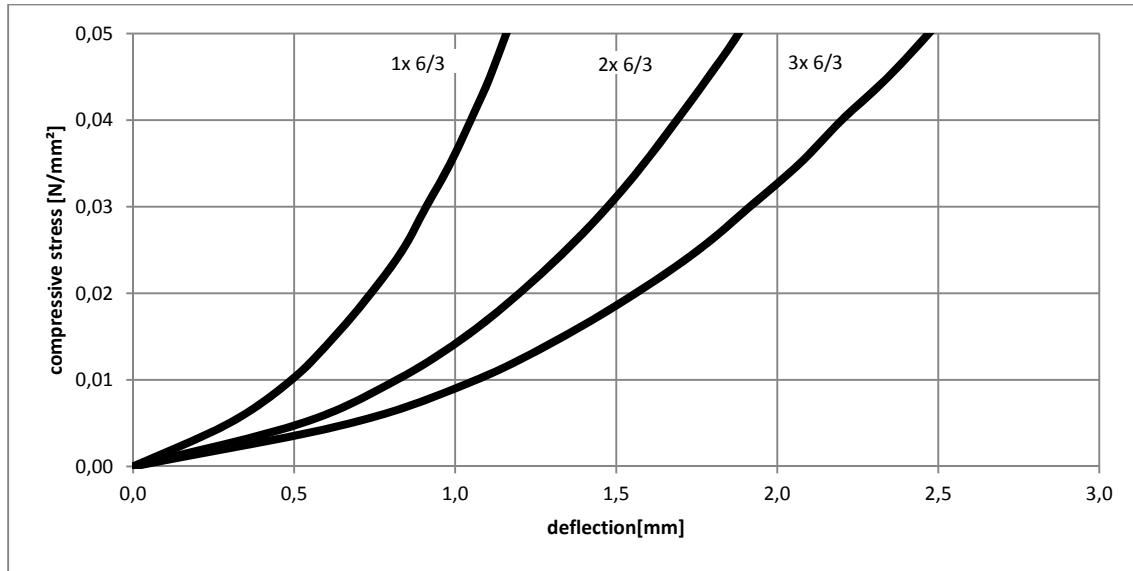
DISCLAIMER:

The information provided is intended only as a summary and general overview on matters of interest. The information is not intended to be comprehensive nor does it constitute expert advice. KRAIBURG RELASTE C shall not be liable for incidental and/or consequential damages directly or indirectly sustained, nor any loss caused by not complying with relevant industry/product standards and improper use of any Damtec® products. Due to varying construction methods, any other circumstances not stated above should be brought to the attention of KRAIBURG RELASTE C for review. For suitability to the prevailing site conditions, it is advised that certified testing should be conducted. It is recommended to seek further advice on your application with our technical staff prior to use.

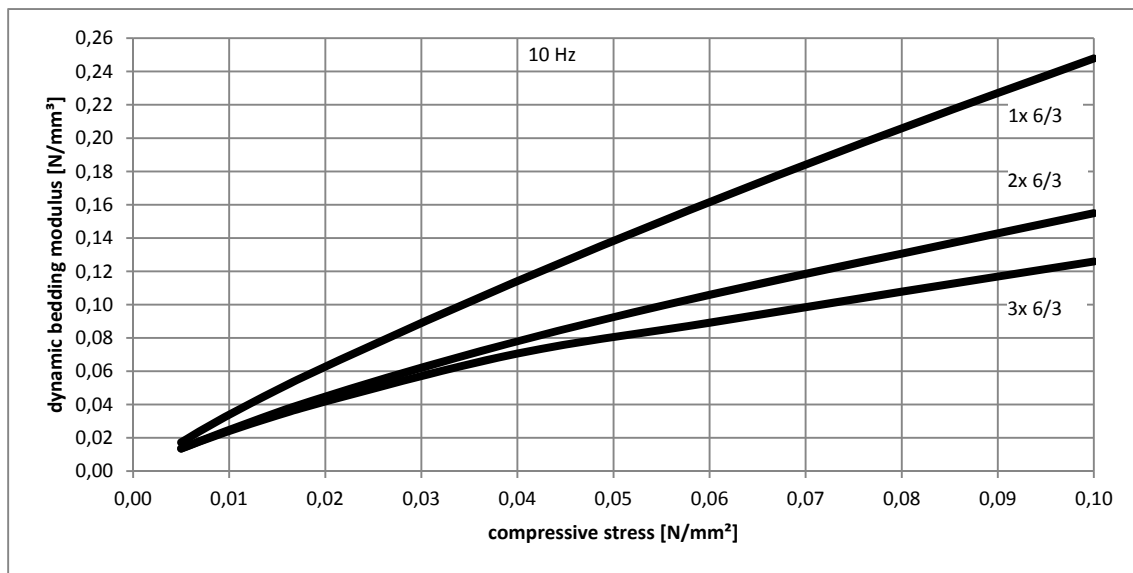
The data sheet is not subject to any change service! All information is without guarantee.
With the publication of this product data sheet all former issues cease to be valid.

Seite 2 von 4

7. Spring Characteristic:

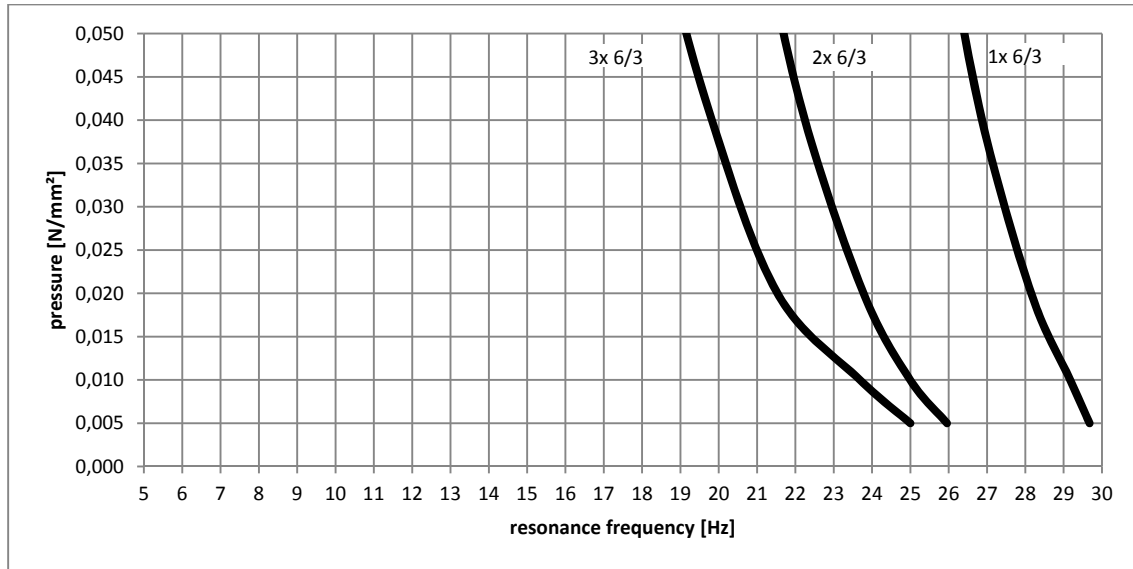


8. Dynamic Bedding Modulus:

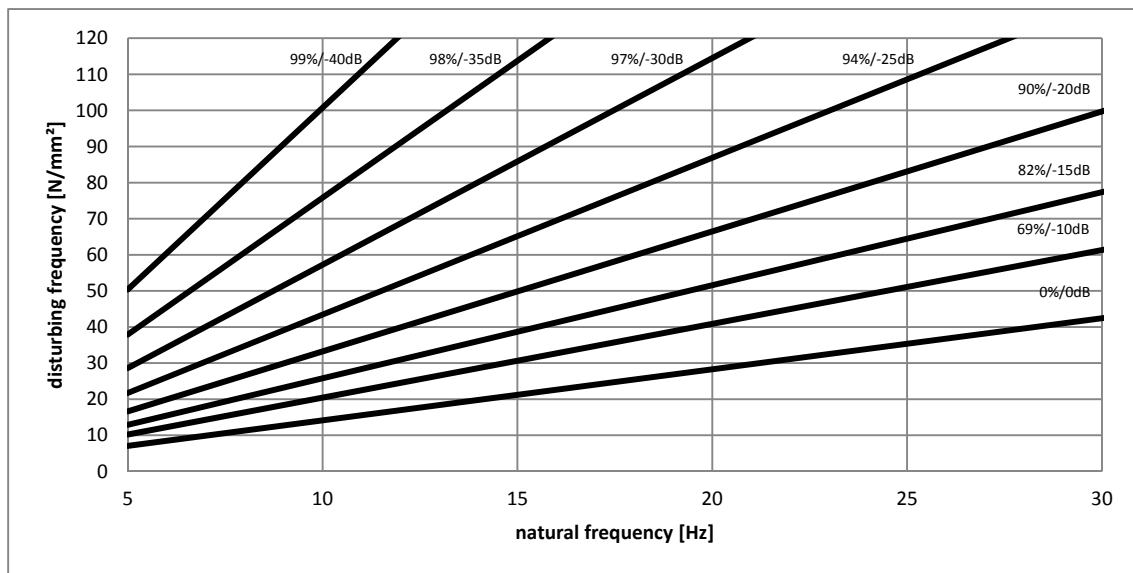


The data sheet is not subject to any change service! All information is without guarantee.
With the publication of this product data sheet all former issues cease to be valid.

9. Resonance Frequency:



10. Vibration Insulation:



The data sheet is not subject to any change service! All information is without guarantee.
With the publication of this product data sheet all former issues cease to be valid.